

Audica Professional Warranty

Audica Professional passive loudspeakers are guaranteed for a period of five years from the date of purchase from an authorised Audica Professional distributor, subject to no evidence of misuse, overload, or accidental damage.

If at any time during this warranty period the equipment proves to be defective for any reason other than accident, misuse, neglect, unauthorised modification or fair wear and tear, we will repair any such manufacturing defect or, at our option, replace it without charge for labour or parts.

Goods for repair should, in the first instance, be returned to the supplying dealer. If this is not possible the item/s should be sent carriage paid, preferably in the original packaging, to Audica Professional or its appointed regional distributor, accompanied by proof of purchase. Damage sustained by goods in transit to the repair centre is not covered by the warranty. Return carriage will be paid by Audica Professional or their distributor as appropriate.

The warranty does not in any way affect your legal rights.

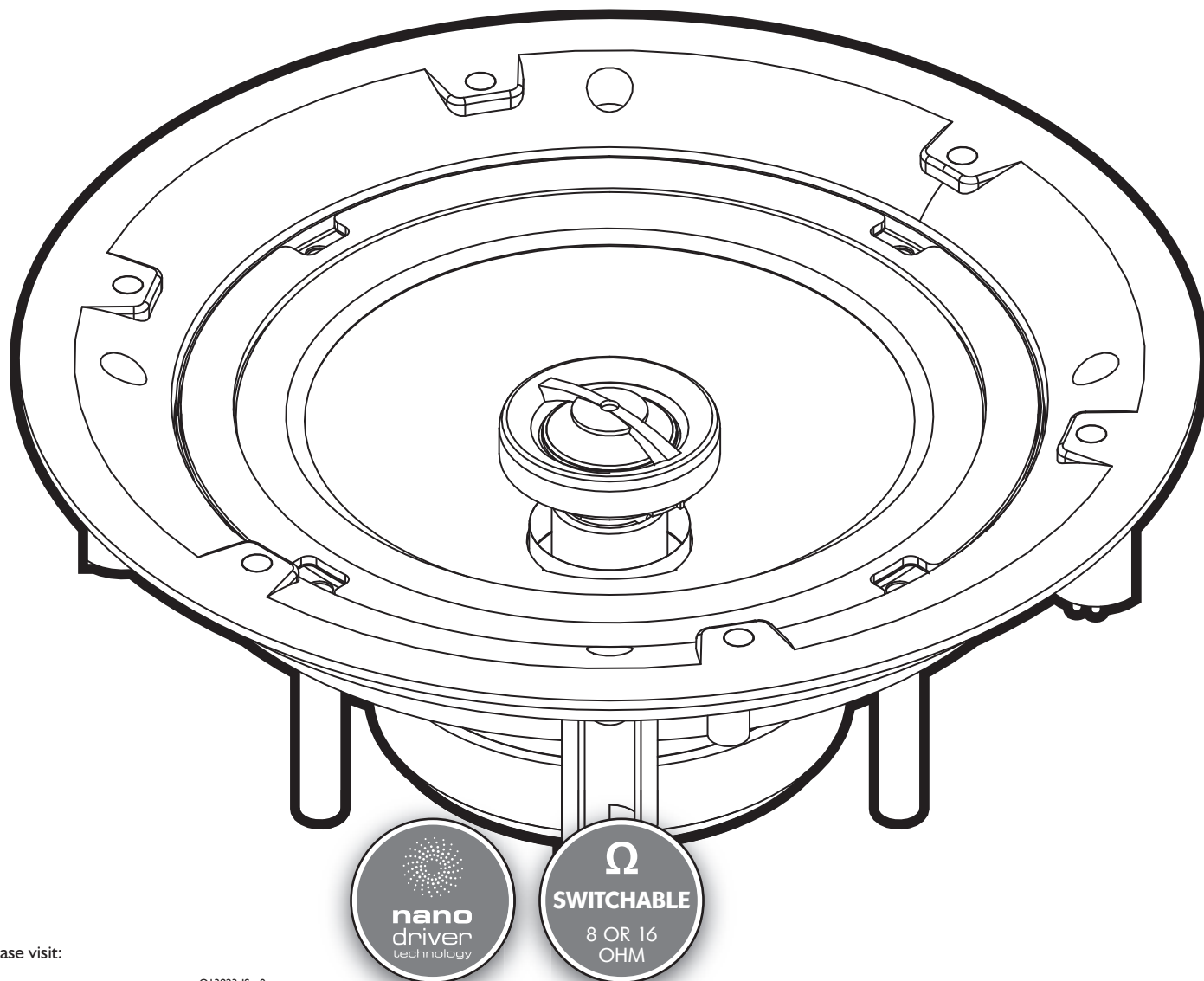
AUDICA

Installation Manual for:

Manual de l'utilisateur pour:

median icl25 / median icl65

in-ceiling loudspeakers



For details of your Audica Professional distributor, please visit:

www.audicapro.co.uk

Q13923-IS_r0

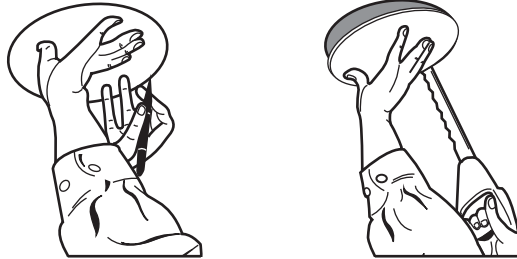
Thank you for purchasing Audica Professional loudspeakers.
Please take a few minutes to familiarise yourself with the installation procedure.
The loudspeakers are designed for installation into plasterboard ceilings or stud wall cavities.

Warning Notices

- Before cutting the mounting hole ensure that there is no conflict with other in-ceiling or in-wall installed items such as pipe work, electrical cabling, gas pipes and supporting joists etc.
- It is important to ensure that the installation complies with relevant building regulations.
- Take care not to apply pressure to the speaker cone and tweeter dome during installation.
- Ensure that the speaker model is suitable for use in the intended application. The ic125 and ic165 models should NOT be used where there are high levels of moisture.

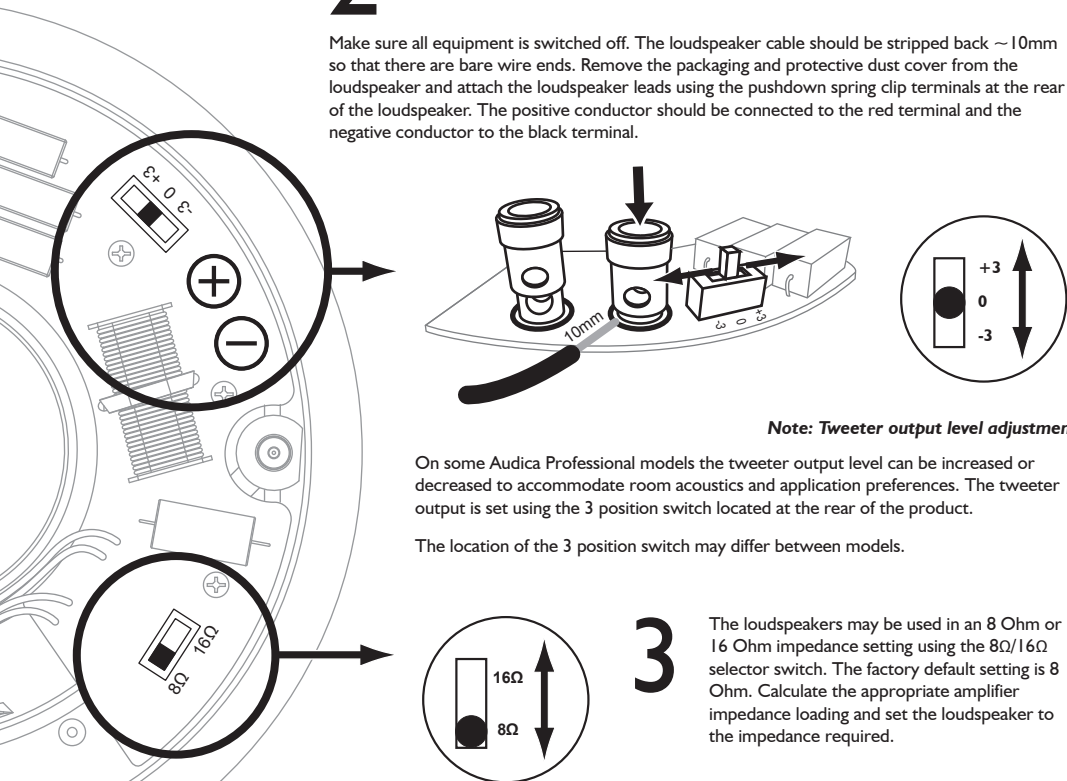
INSTALLING THE LOUDSPEAKERS

Select a suitable mounting location for the speaker taking note of the Warning Notices above. Using the installation template supplied mark the loudspeaker position and cut the mounting hole.



2

Make sure all equipment is switched off. The loudspeaker cable should be stripped back ~10mm so that there are bare wire ends. Remove the packaging and protective dust cover from the loudspeaker and attach the loudspeaker leads using the pushdown spring clip terminals at the rear of the loudspeaker. The positive conductor should be connected to the red terminal and the negative conductor to the black terminal.



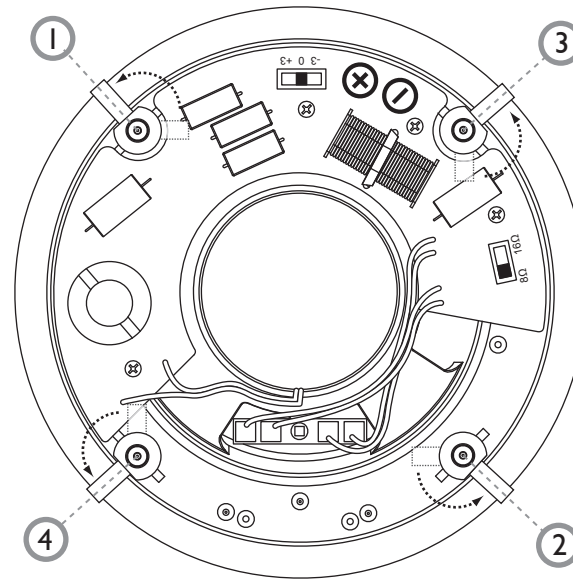
Note: Tweeter output level adjustment

On some Audica Professional models the tweeter output level can be increased or decreased to accommodate room acoustics and application preferences. The tweeter output is set using the 3 position switch located at the rear of the product.

The location of the 3 position switch may differ between models.

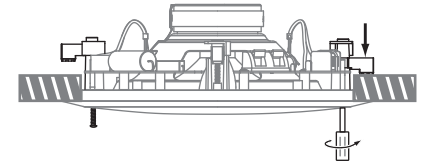
3

The loudspeakers may be used in an 8 Ohm or 16 Ohm impedance setting using the 8Ω/16Ω selector switch. The factory default setting is 8 Ohm. Calculate the appropriate amplifier impedance loading and set the loudspeaker to the impedance required.



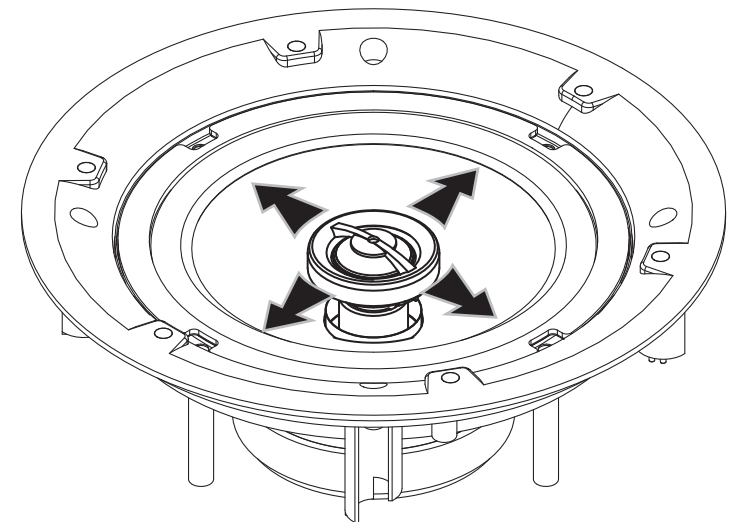
4

Check that each of the 4 swing out clamps are rotated inwards. Push the loudspeaker through the mounting hole and position flush with the ceiling. Whilst holding the loudspeaker in place tighten each of the mounting screws using a No. 2 Pozidriv® screw driver in the order shown in the diagram (left). When an increase in resistance is felt the clamp is in position.



5

Once the loudspeakers are installed they should be tested before the grilles are fitted. All loudspeakers feature a swivel tweeter that may be adjusted allowing the high frequencies to be directed towards the area where coverage is required. The tweeter's outer frame (not dome) should be pushed gently to achieve the desired tweeter position.



6

The loudspeakers feature a magnetic grille, which locates over the speaker bezel where it will be pulled into place. Note that grilles may be rotated to any angle required.

Grille backing cloth

Some models feature a white backing cloth behind the grille to help minimize visual contrast with the ceiling. For the very best sound performance it is recommended that this cloth is removed before use. To remove simply peel away the backing cloth from the grille.